


La Plata Conservancy District Mapping Project Update


NOVEMBER 4, 2015



Purpose

- Catalog and map existing irrigation infrastructure in LPCD as first step in conservation projects
 - Provide LPCD with a model of existing irrigation infrastructure throughout district
 - Data can be used to identify and prioritize areas in which efficiency improvements can be made
 - Model will assist LPCD with acquisition and use of grants or other future money for conservation projects
- 

Process


- Physically locate infrastructure features throughout district with assistance from LPCD water master and collect data with GPS, roughly 48 miles of ditch
 - Ditch centerlines, diversions, return flow points, headgates, culverts, syphons, utility crossings, and any other features found were collected
 - Edit data for accuracy, QA/QC
 - Provide LPCD with data
- 

Progress

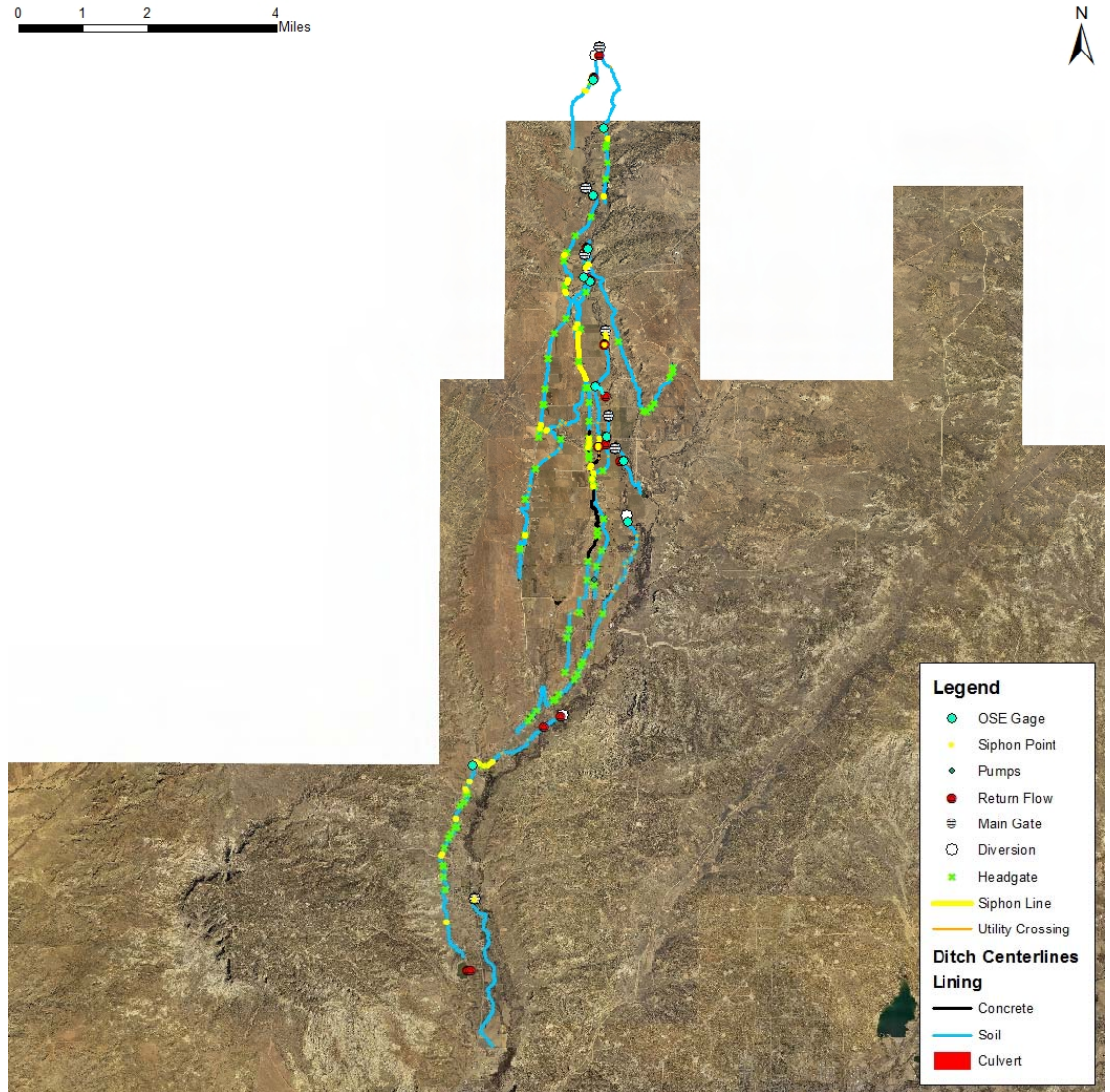
Complete

- Field work began July 2014 and was completed January 2015
- Data editing and model composition complete

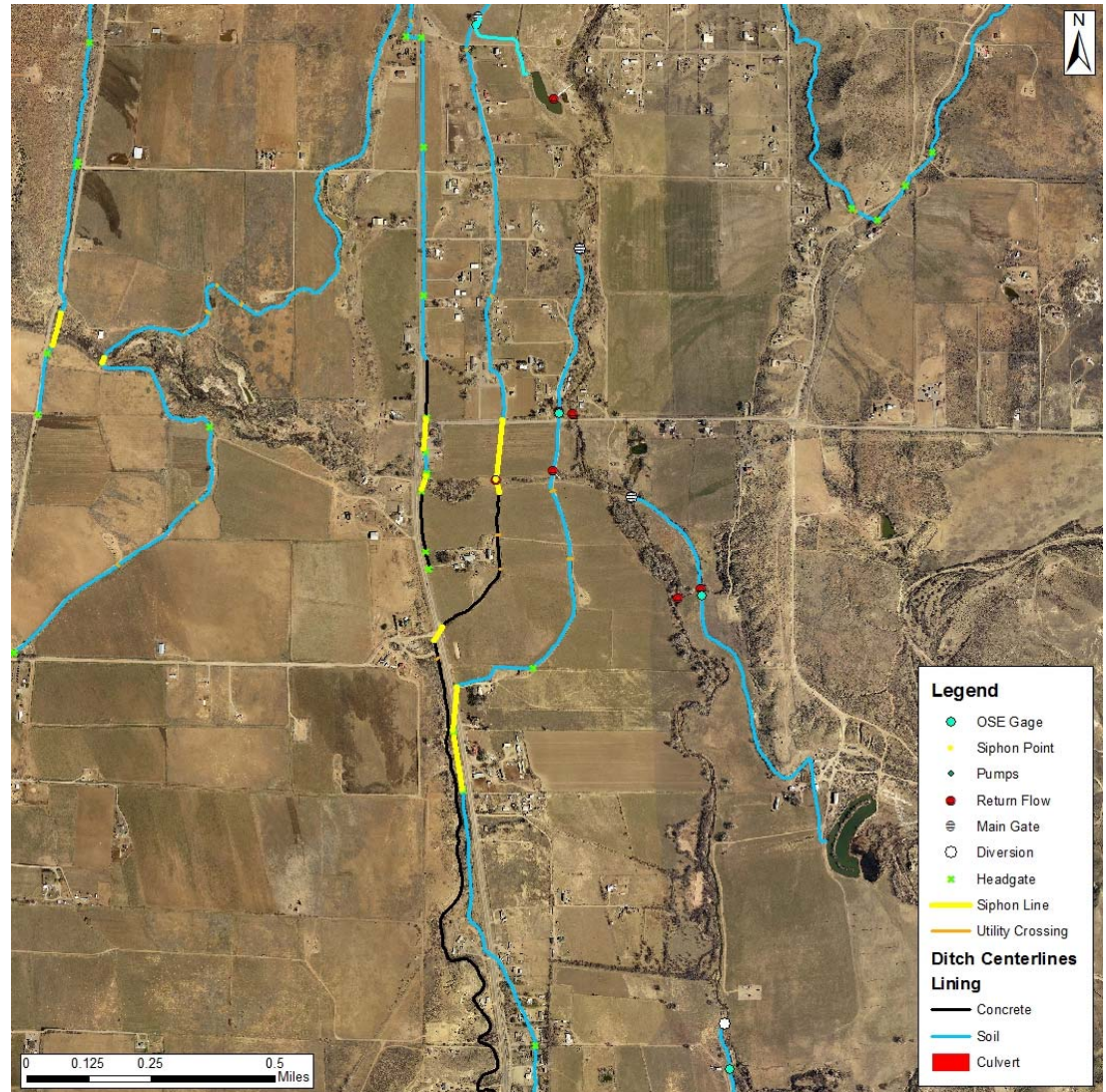
Remaining

- Consult with LPCD on format of deliverable and provide maps and data to LPCD
- 

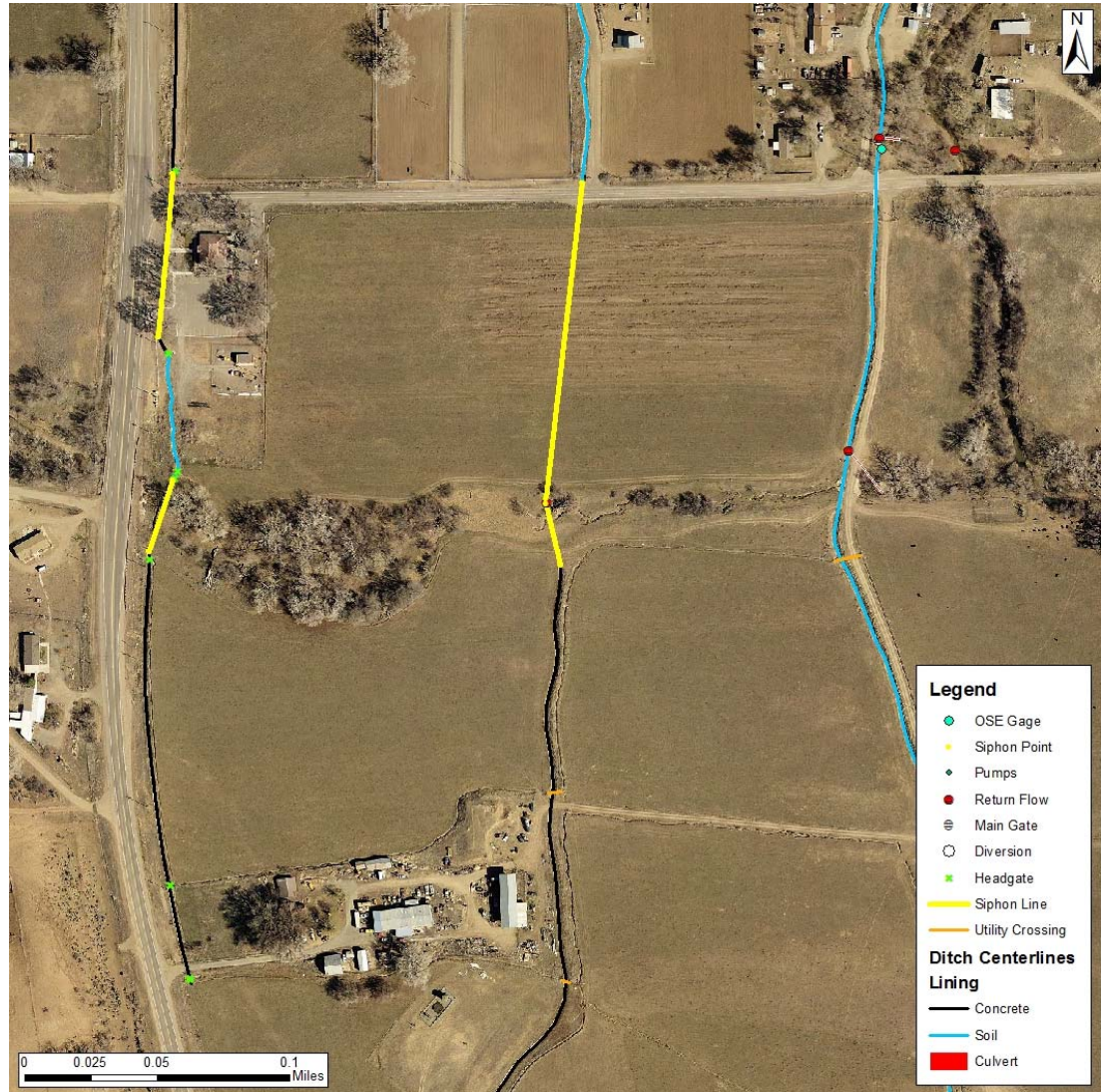
Model Overview



Detail View 1



Detail View 2



Detail View 3

